

# Mini Follow Focus MFF-2



Configuration Overview | 6.1.0 / 2021.01

## Mini Follow Focus MFF-2 Cine Sets

Cine: Gear Ratio 2:1



**MFF-2 Cine Standard Set**  
Consists of:  
Mini Follow Focus MFF-2 Cine,  
Focus Knob Standard left,  
Focus Gear 0.8/43 teeth,  
[KK.0005759](#)  
K2.65255.0  
K2.65253.0  
K2.65259.0



**MFF-2 Cine Hard Stop Set**  
Consists of:  
Mini Follow Focus MFF-2 Cine,  
Focus Knob Hard Stop,  
Focus Gear 0.8/43 teeth,  
[KK.0005760](#)  
K2.65255.0  
K2.65248.0  
K2.65259.0



**MFF-2 Cine 2-Speed Set**  
Consists of:  
Mini Follow Focus MFF-2 Cine,  
Focus Knob 2-Speed,  
Focus gear 0.8/43 teeth,  
KK.0005761  
K2.65255.0  
K2.66129.0  
K2.65259.0



**MFF-2 Cine Standard/Hard Stop Set**  
Consists of:  
Mini Follow Focus MFF-2 Cine,  
Focus Knob Standard left,  
Focus Knob Hard stop,  
Focus Gear 0.8/43 teeth,  
[KK.0005762](#)  
K2.65255.0  
K2.65253.0  
K2.65248.0  
K2.65259.0

## Mini Follow Focus MFF-2 HD Sets

HD: Gear Ratio 1:1



**MFF-2 HD ENG Standard Set**  
Consists of:  
Mini Follow Focus MFF-2 HD,  
Focus Knob Standard left,  
Focus Gear 0.6/64 teeth,  
Focus Gear 0.5/78 teeth,  
[KK.0005772](#)  
K2.65260.0  
K2.65253.0  
K2.47632.0  
K2.47631.0



**MFF-2 HD ENG Hard Stop Set**  
Consists of:  
Mini Follow Focus MFF-2 HD,  
Focus Knob Hard Stop,  
Focus Gear 0.6/64 teeth,  
Focus Gear 0.5/78 teeth,  
KK.0005773  
K2.65260.0  
K2.65248.0  
K2.47632.0  
K2.47631.0



**MFF-2 HD SLR Hard Stop Set**  
Consists of:  
Mini Follow Focus MFF-2 HD,  
Focus Knob Hard Stop,  
Focus gear 0.8/43 teeth,  
[KK.0005774](#)  
K2.65260.0  
K2.65248.0  
K2.65259.0

## Base and Accessories MFF-2



**MFF-2 Cine, [K2.65255.0](#)**  
gears and nob need to  
be ordered separately  
gear ratio: 1:2



**Flexible Shaft, short**  
[K2.34100.0](#) (300 mm)



**MFF-2 HD, [K2.65260.0](#)**  
gears and knob need to  
be ordered separately  
gear ratio: 1:1



**Flexible Shaft, long**  
[K2.32731.0](#) (900 mm)



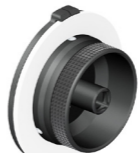
**Focus lever**  
[K2.32730.0](#)



**Hard Stop Focus Knob**  
for left, [K2.65248.0](#)  
(incl. 1x K4.47621.0)



**Marking Disk**  
bevelled, [K4.47621.0](#)  
flat, [K2.47292.0](#)



**Focus Knob Standard**  
left, [K2.65253.0](#)  
(incl. 1x K2.32701.0)



**Marking disk**  
bevelled, [K2.47248.0](#)  
flat, [K2.32701.0](#)



**2-Speed Focus Knob**  
left, [K2.66129.0](#)  
(incl. 1x K2.32701.0 )

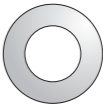


**Marking disk**  
bevelled, [K2.47248.0](#)  
flat, [K2.32701.0](#)



**Zip Gear cpl., [K2.66131.0](#)**  
incl. zoom or locking pin to equip  
photo lens with a proper 0,8  
gearing zooming or as a support  
with LS-11 (for 15 mm rods - rods  
not incl.)

**Zip Gear Basic Set, [KK.0005755](#)**  
consists of 2 zip gears cpl.



**Set of Marking Disk**  
(10x K2.32701.0), [KK.0005768](#)

**Set of Marking Disk**  
(5x K2.32701), [KK.0005769](#)

## Follow Focus Gears



FF Gear 0.8 Mod,  
35 Tooth, 10mm

**Module Gear for**  
smaller prime lenses  
and 16mm zooms  
[K2.65276.0](#)



FF Gear 0.8 Mod,  
35 Tooth, 25mm

**Gear for lenses with axial**  
movement of focus ring  
[K2.47557.0](#)



FF Gear 0.8 Mod,  
35 Tooth, 45mm

**Gear for prime lenses with**  
large barrels or lenses with  
extending element when  
pulling focus, [K2.0020132](#)



FF Gear 0.8 Mod,  
43 Tooth, 45mm

**Gear for zoom lenses with**  
large barrels or lenses with  
extending element when  
pulling focus, [K2.0020752](#)



FF Gear 0.8 Mod,  
43 Tooth, 6mm

**Module Gear**  
for larger prime lenses  
and 35mm zooms  
[K2.65259.0](#)



FF Gear 32 Dp. 14,5 PA,  
35 Tooth, 10mm

**Module Gear**  
for Panavision lenses  
[K2.66055.0](#)



FF Gear 0.5 Mod,  
78 Tooth, 6mm, ENG/EFP

**Focus Gear 0.5 Module**  
for Canon ENG/EFP lenses  
[K2.47631.0](#)



FF Gear 0.5 Mod,  
78 Tooth, 10mm, ENG

**Module Gear - wide face**  
for Canon and Angenieux  
ENG lenses, [K2.65124.0](#)



FF Gear 0.6 Mod,  
64 Tooth, 6mm ENG/EFP

**Focus Gear 0.6 Module**  
for Fujinon ENG/EFP lenses  
[K2.47632.0](#)



FF Gear 0.6 Mod,  
64 Tooth, 10mm ENG

**Module Gear - wide face**  
for Fujinon ENG lenses  
[K2.65125.0](#)

FF Gear 0.8 Mod,  
64 Tooth, 6mm

**Gear for larger prime lenses**  
or for higher transmission  
ratio on FF5 HD with larger  
lenses, [K2.65102.0](#)



**Friction gear**  
[K2.66130.0](#)